

# What Should My Child Wear?

## Dress Uniform

Worn for picture days, special events and field trips

Your child's teacher and/or administration will inform you when this uniform should be worn



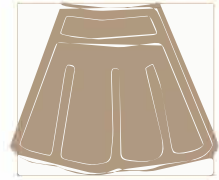
+



or



or

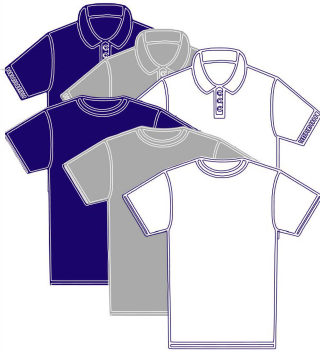


Navy Blue polo

\*with or without the MBE logo

Khaki Pants, Shorts, or Skirt/Skort

## Monday - Friday



+



or



or



Navy Blue, Gray, or White polo or Tshirt

\*free of non-MBE logos and/or embellishments

Navy Blue or Khaki Pants, Shorts or Skirt/Skort



or



Navy Blue or Khaki Dress, with or without a collar

## Additional Friday Options



and



or



or



MBE Spirit Shirts, designs from previous years and shirts given out at school sponsored events

Jeans, Leggings, Sweatpants, Athletic Shorts, and printed skirts/shorts

\* Spirit Shirts and Friday bottoms can be worn together or with uniform tops/bottoms on Fridays